

# My Balsa & Glass Workshop

## Ryan's Office Window Stained Glass Panel Assembly Description

Updated as of 22 January 2025

My youngest son, Ryan, has an office set-up in his home, and he has asked me to assemble a Stained Glass panel to fit inside one of the "South" facing windows in his office. Figure 1 below is his input on a recommended design.

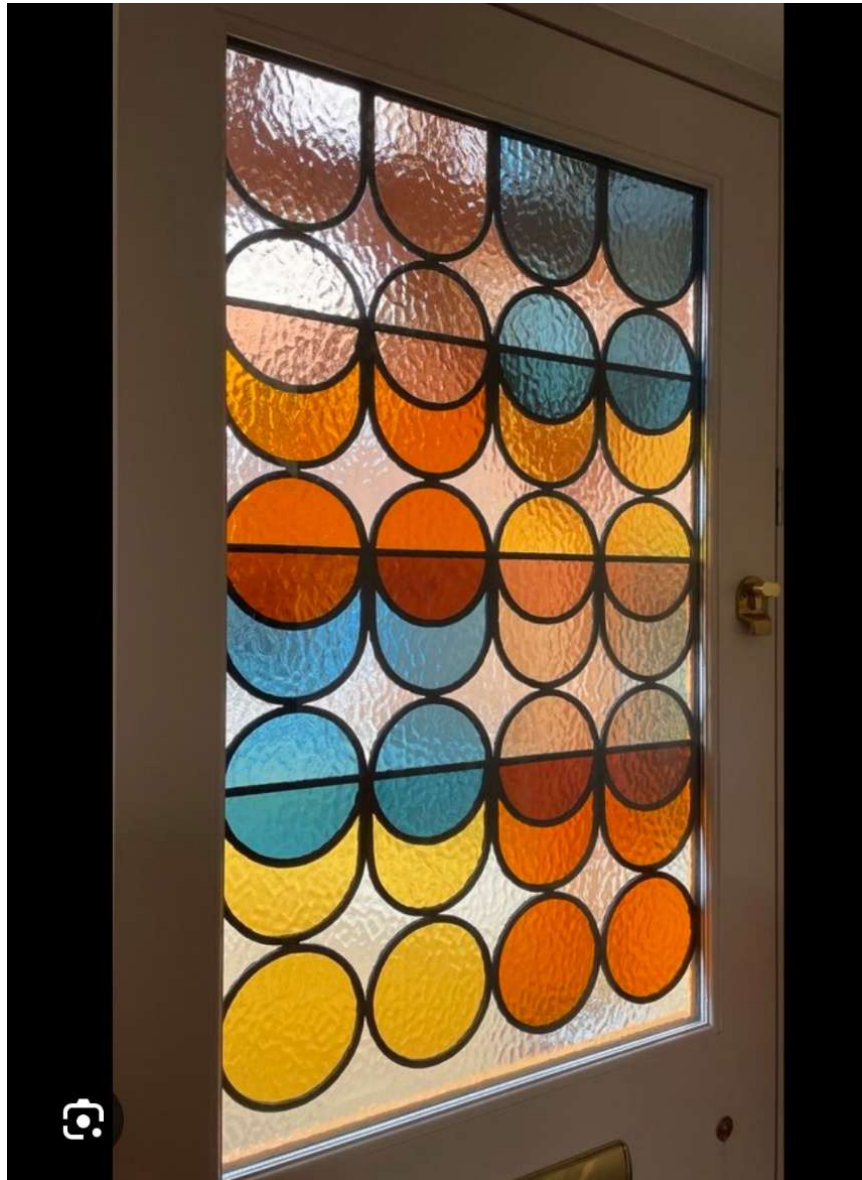


Figure 1 - Recommended Panel Design

So, I started my planning for this project by taking his recommended design and generated a Stained Glass pattern using my “Back To The Drawing Board” (<https://drawingboardapp.com>) 2-CAD program. I exported the resulting drawing as a PNG file, which was then imported into Microsoft Paint to apply some colors. The results shown in Figure 2 below are my first cut at an **85 piece** Stained Glass panel pattern for his 28” x 37” window.

This will be a “Lead Came” Stained Glass assembly, using Cascade 1/8” Round H Lead Came (<https://www.anythinginstainedglass.com/metals/came.html>), and framed in Cascade 9/32” U Zinc Channel (<https://www.anythinginstainedglass.com/finishing/zincBrassRebar.html>). I am currently looking at using transparent Oceanside Rough Rolled Textured Stained Glass (<https://oceansidecompatible.com/collections/sheet-glass/>). Samples of the Stained Glass sheets are shown below the panel pattern image.

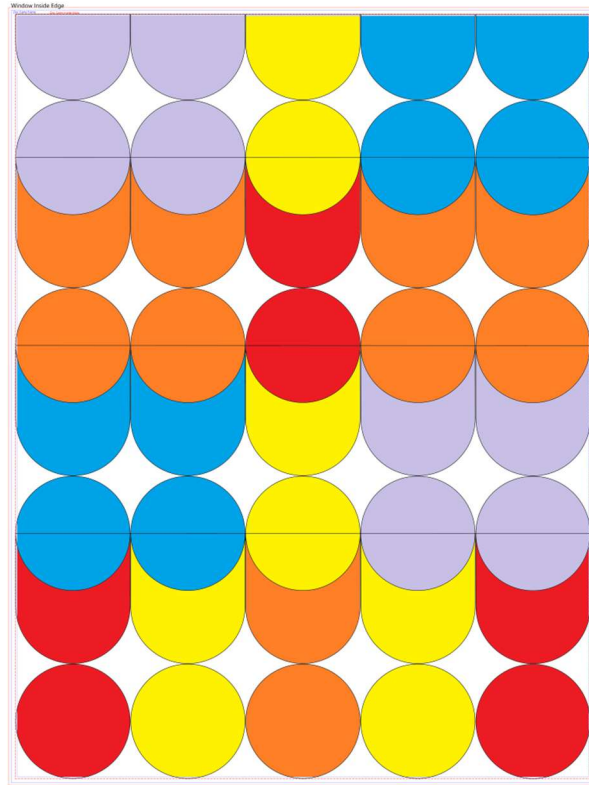


Figure 2 – Resulting Panel Pattern and Stained Glass Sheet Samples