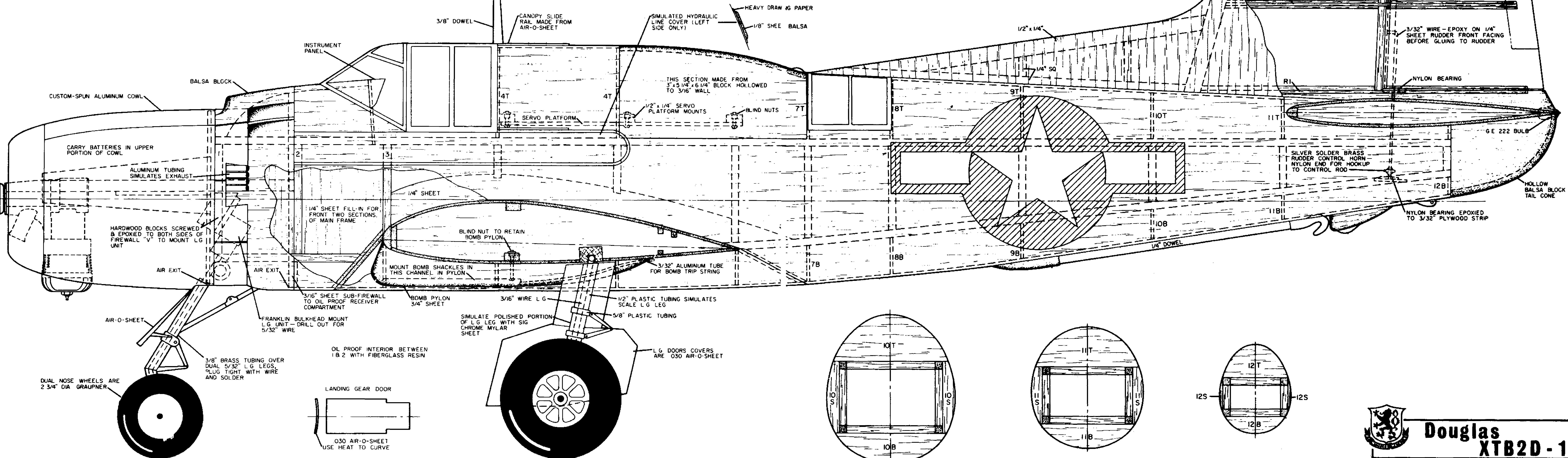
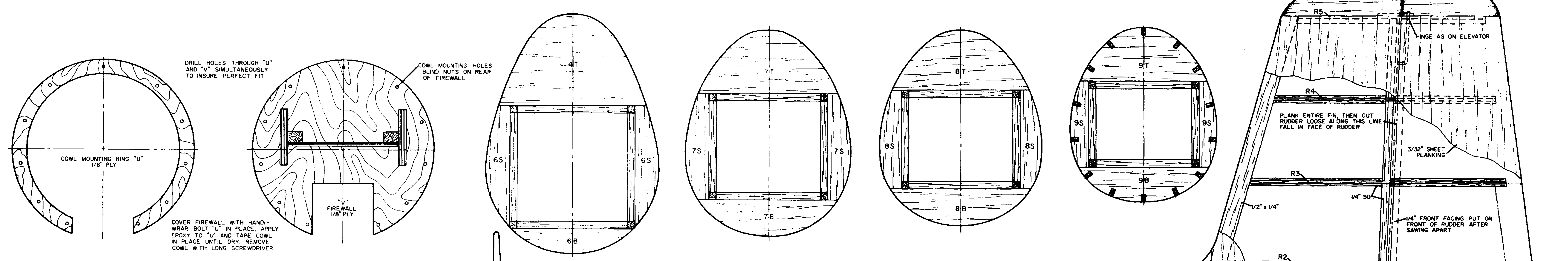

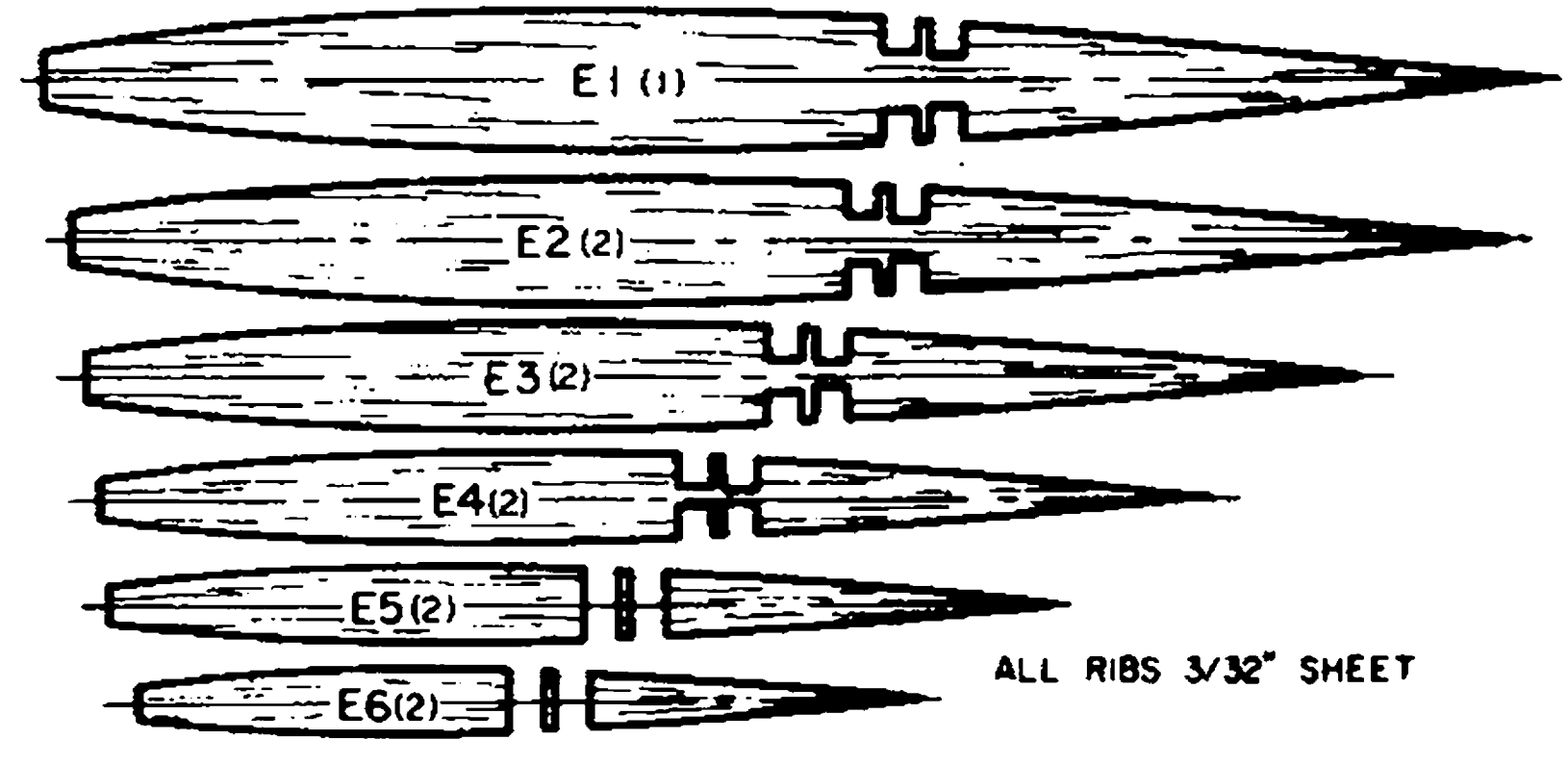
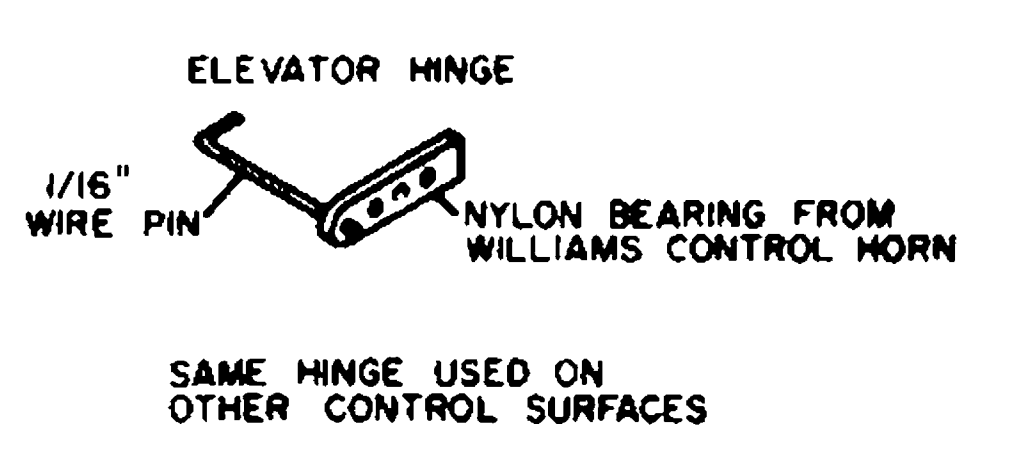
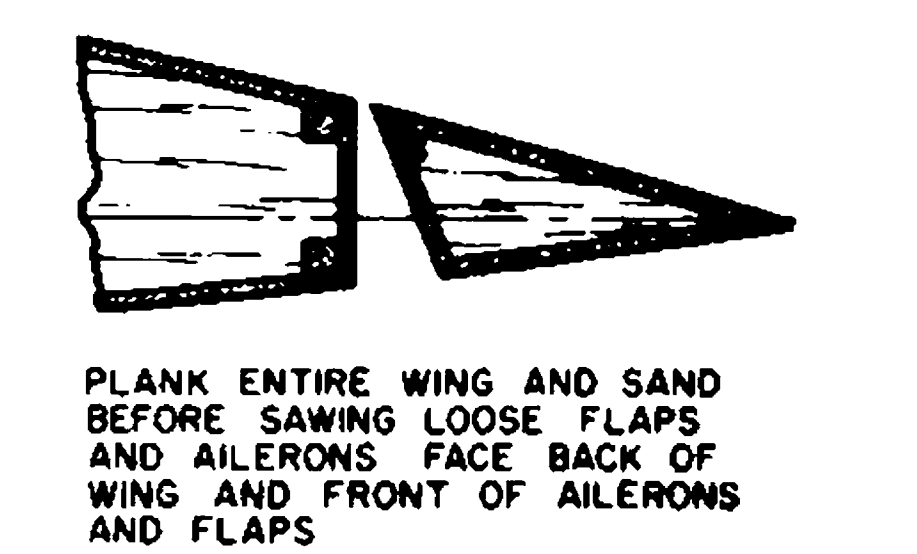
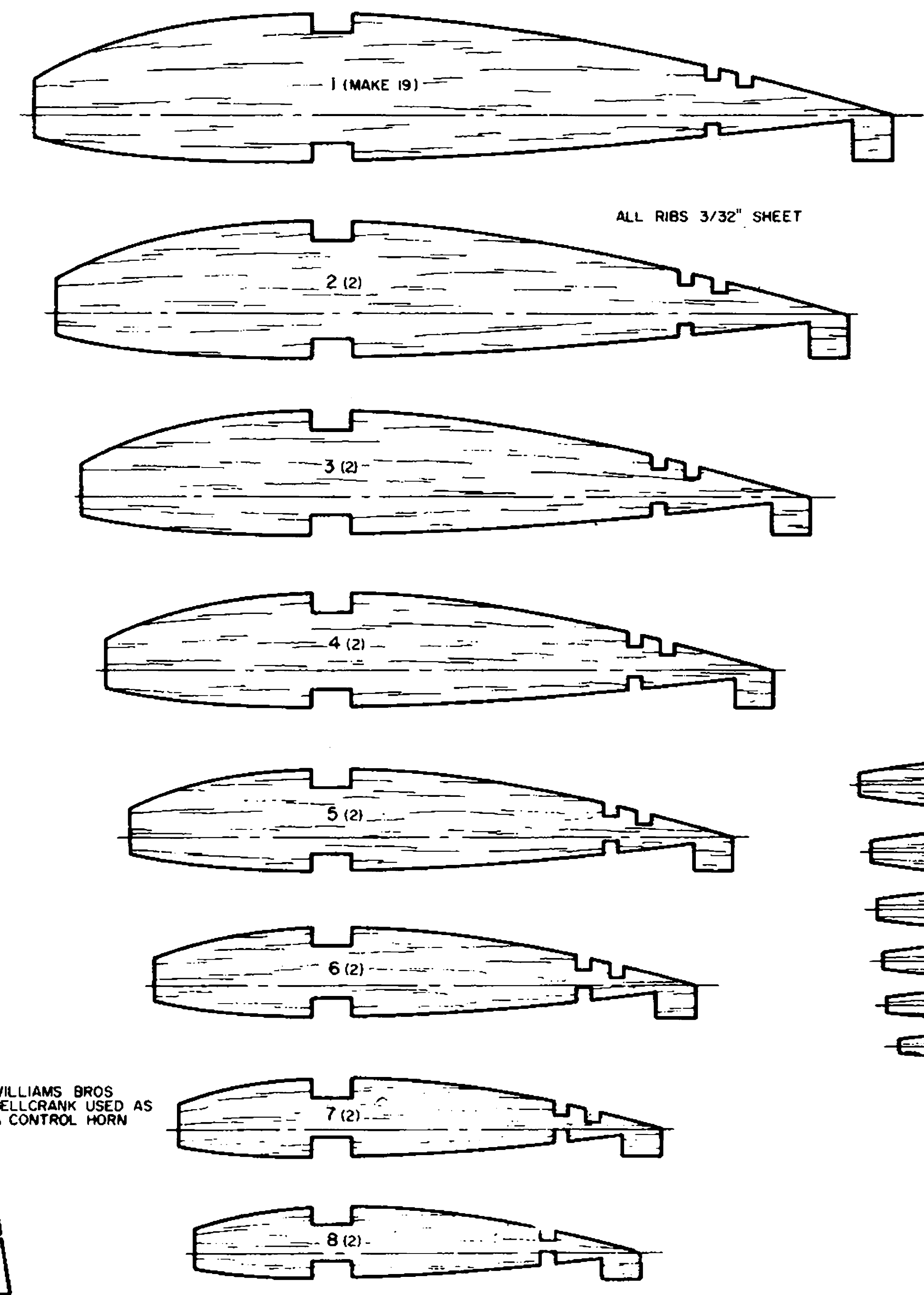
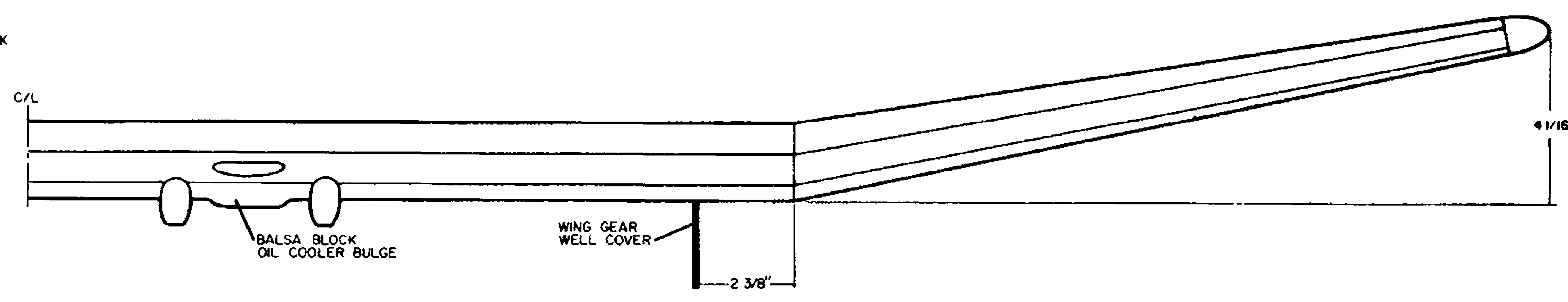
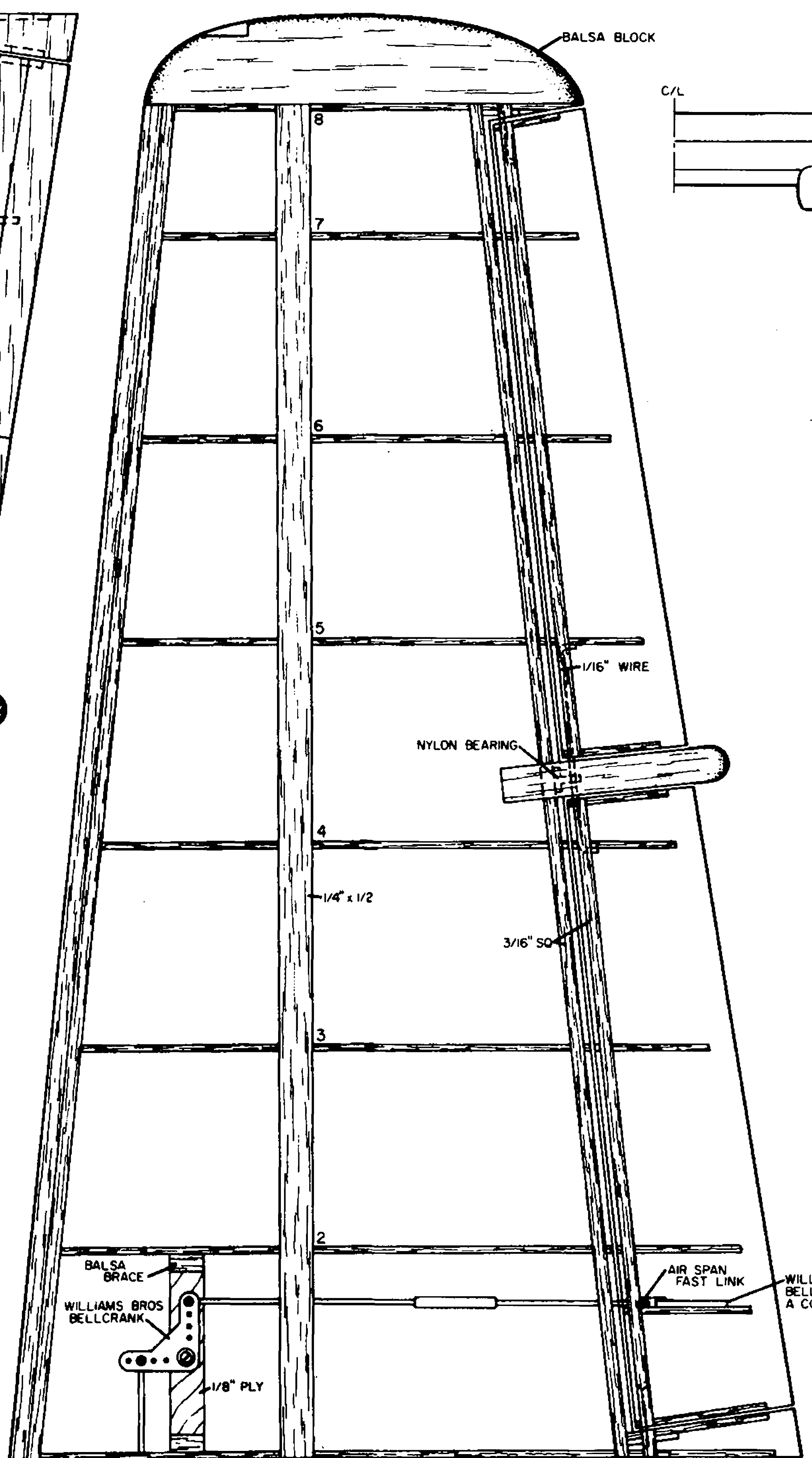
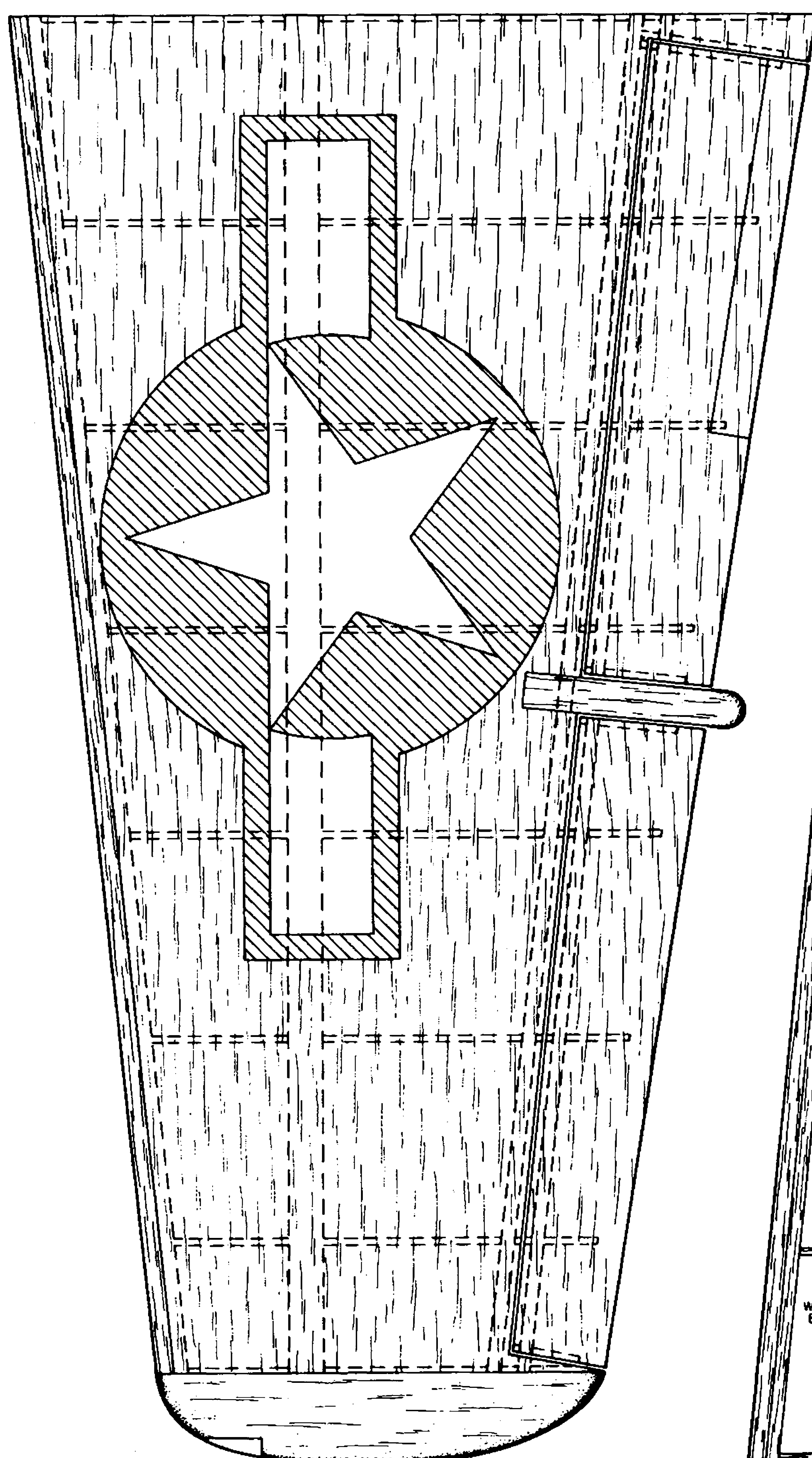
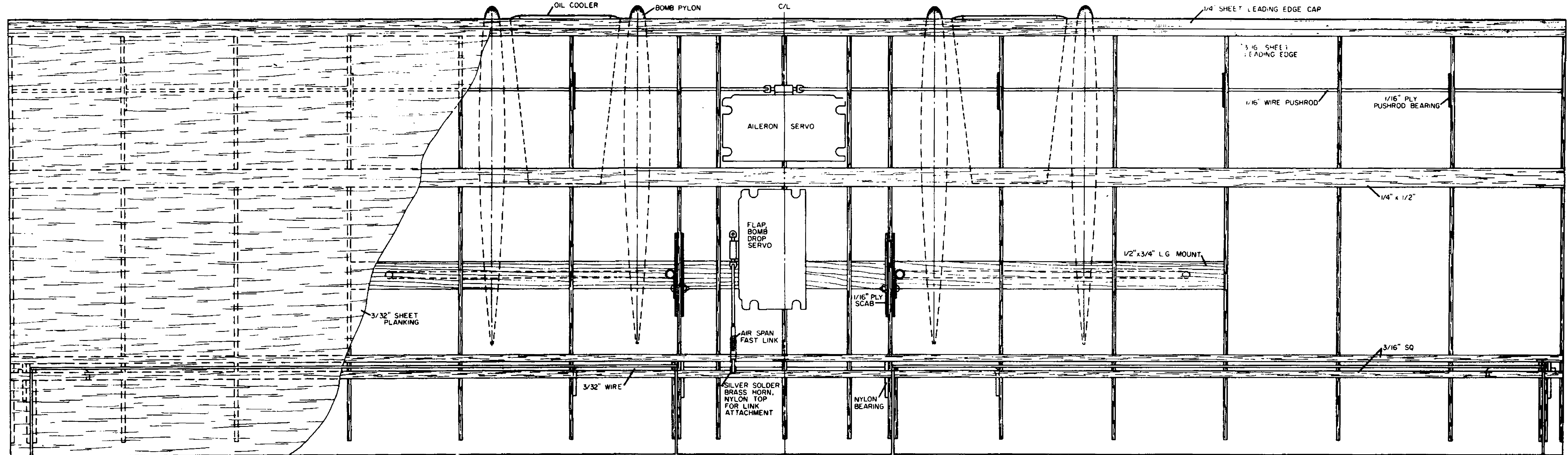
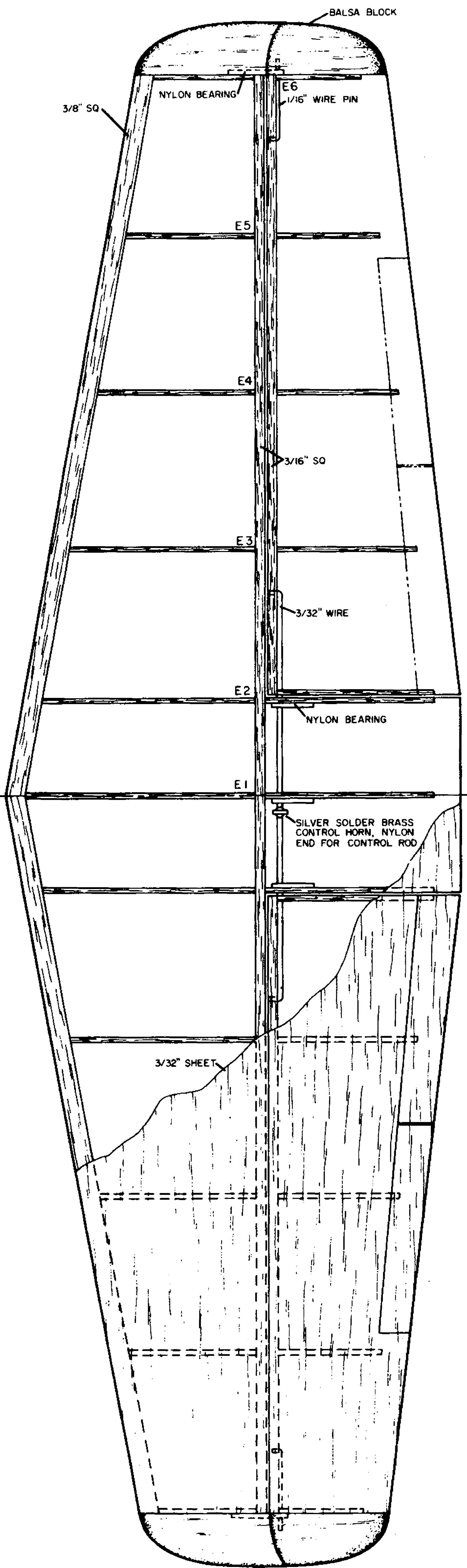


MOUNT MOTOR ON 1/4" PLYWOOD BREAKAWAY PLATE

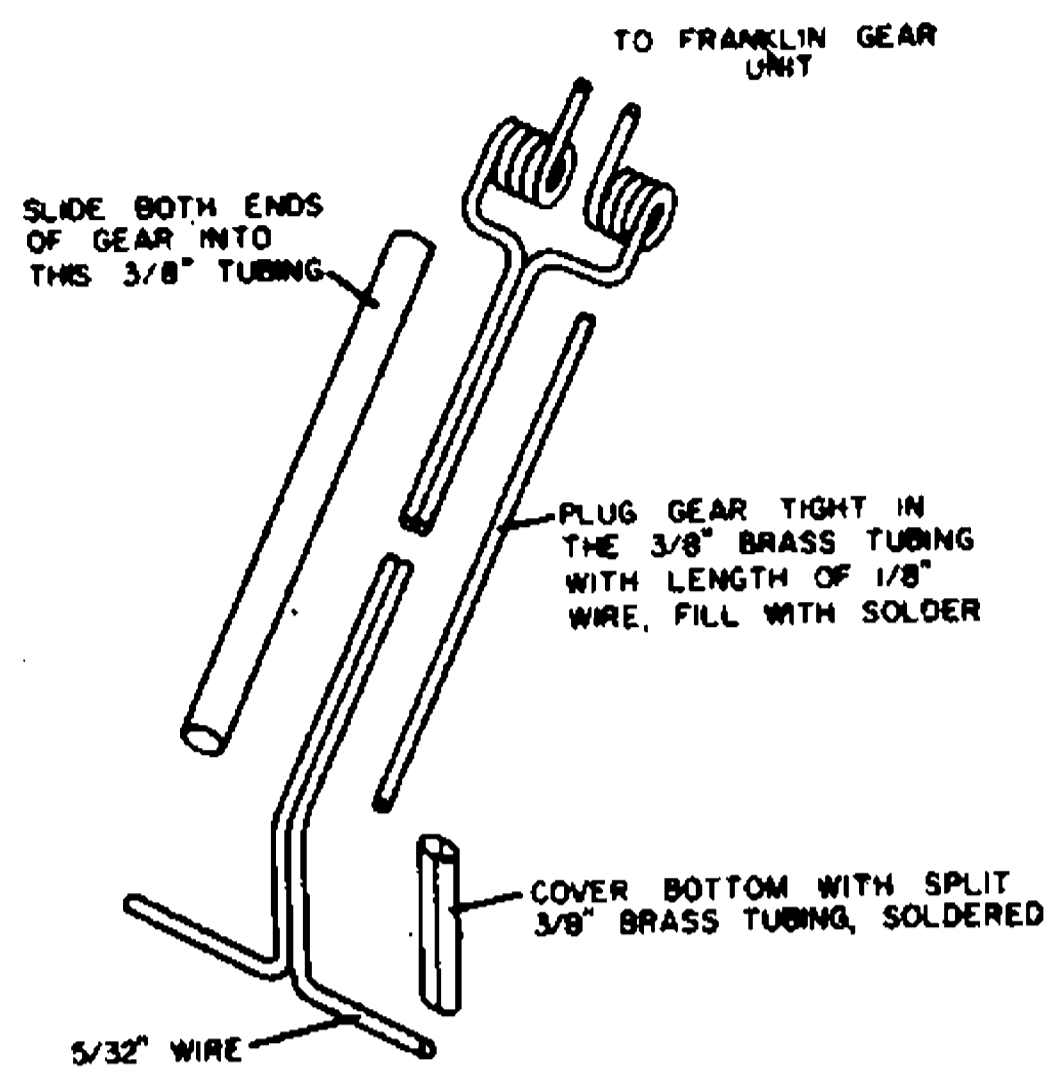



**Douglas**  
**XTB2D-1**

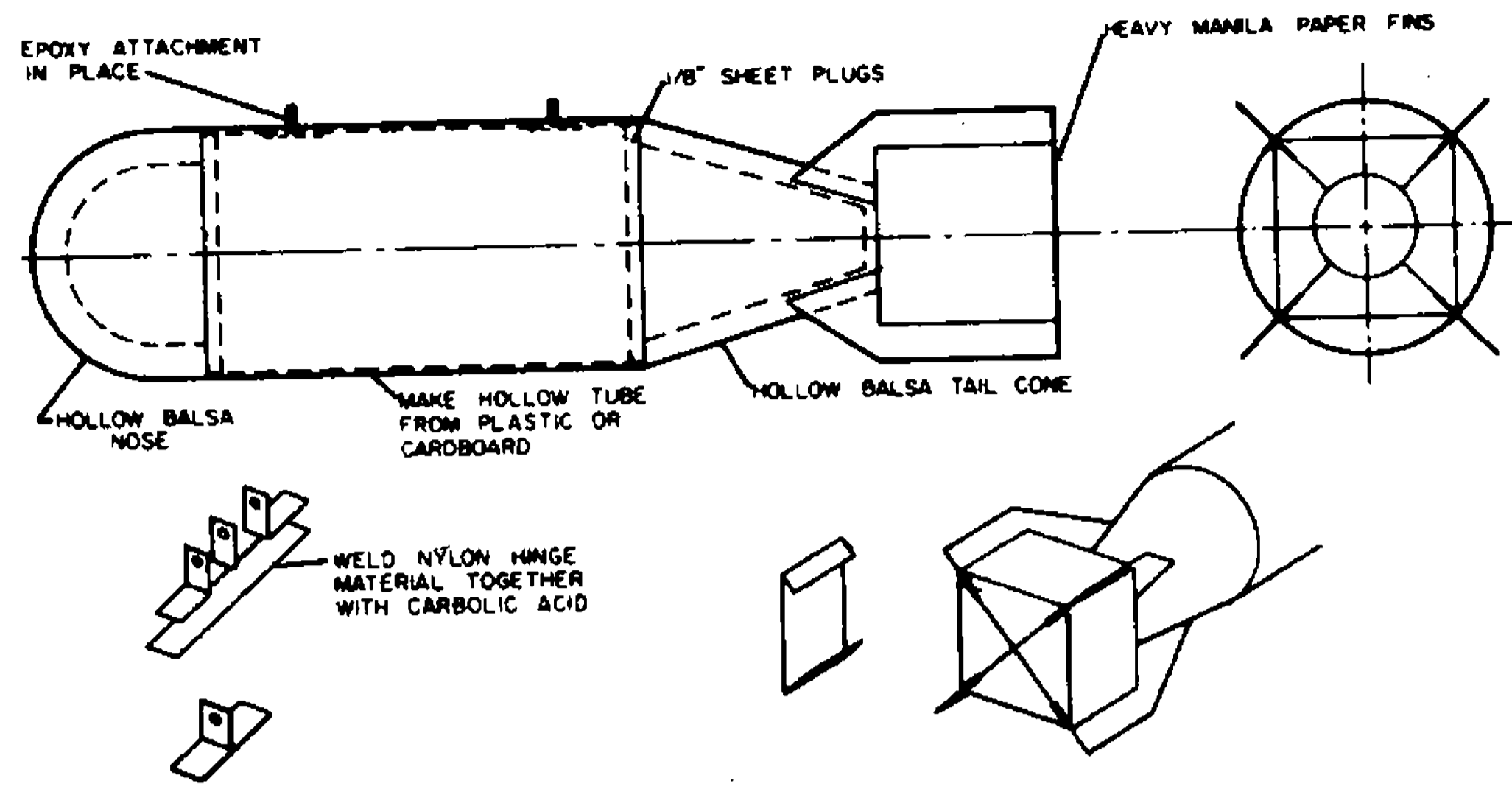
DESIGNED & DRAWN BY: CLAUDE McCULLOUGH  
INKED BY: MIKE CROWLEY



**NOSE GEAR CONSTRUCTION**

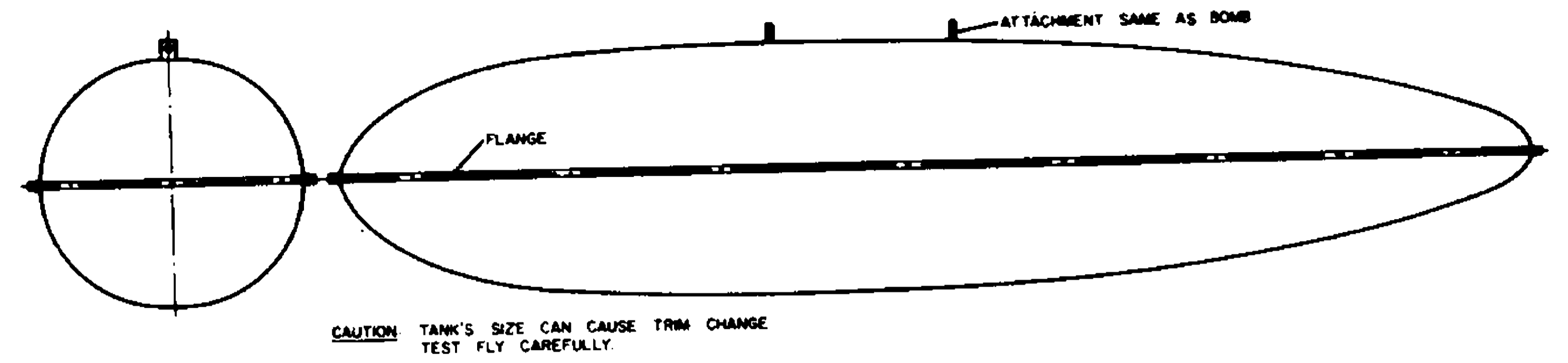


**BOMB FOR XTB2D-1**

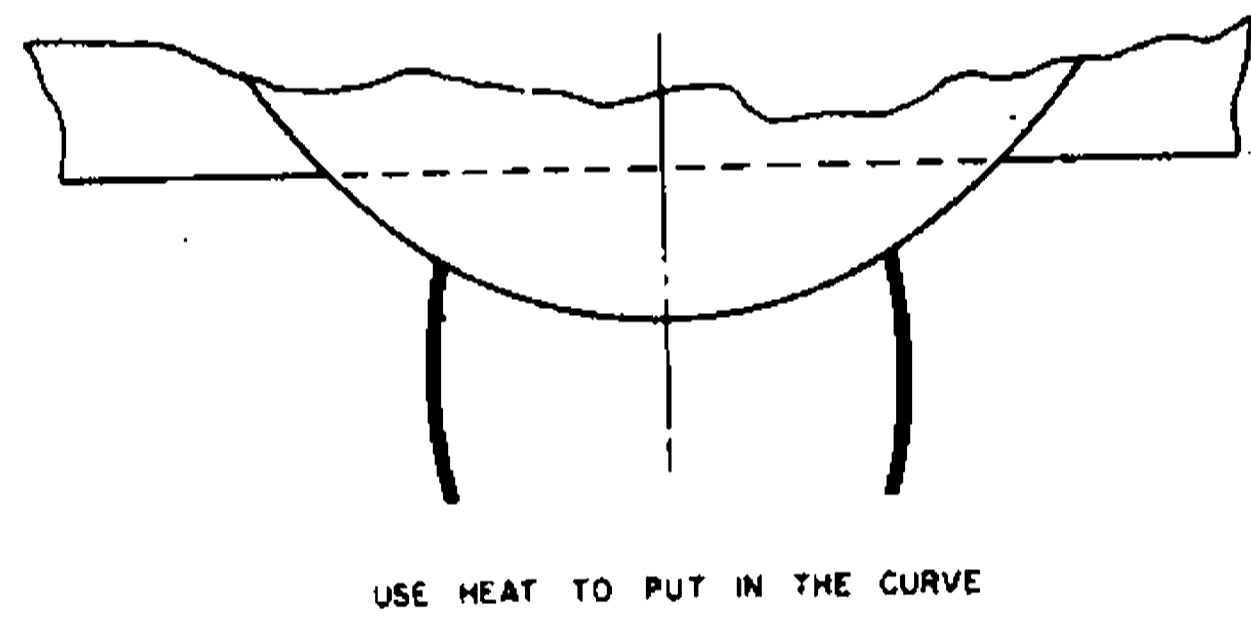


**300 GAL DROP TANK FOR XTB2D-1**

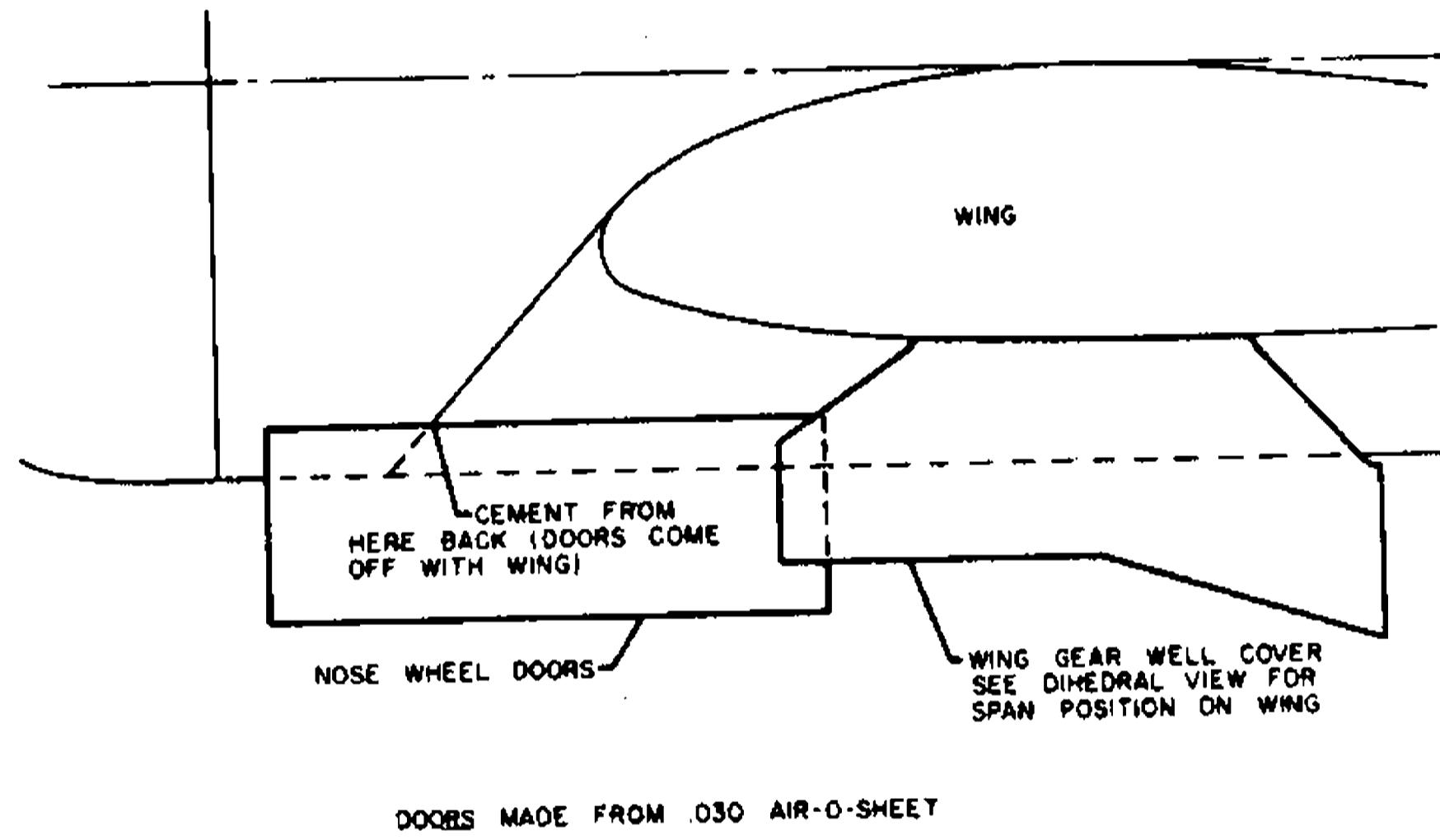
MADE IN TWO HALVES OF FIBERGLASS IN PLASTER MOLD (COULD ALSO BE MADE FROM HOLLOW Balsa) CENTER LINE FLANGE IS USED TO JOIN HALVES JUST AS IN PROTOTYPE TANK



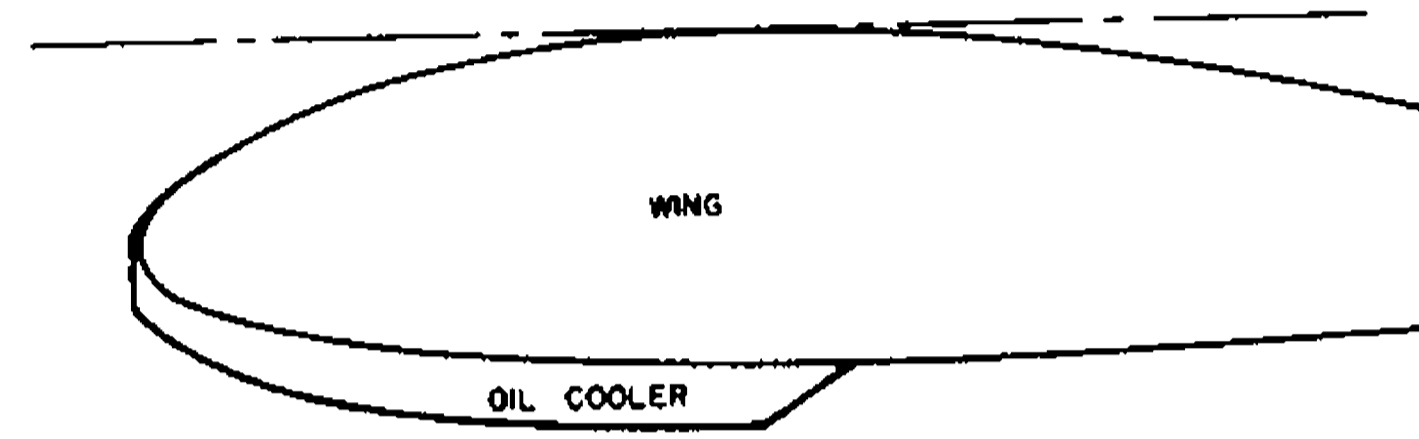
**FRONT VIEW OF NOSE WHEEL DOORS**



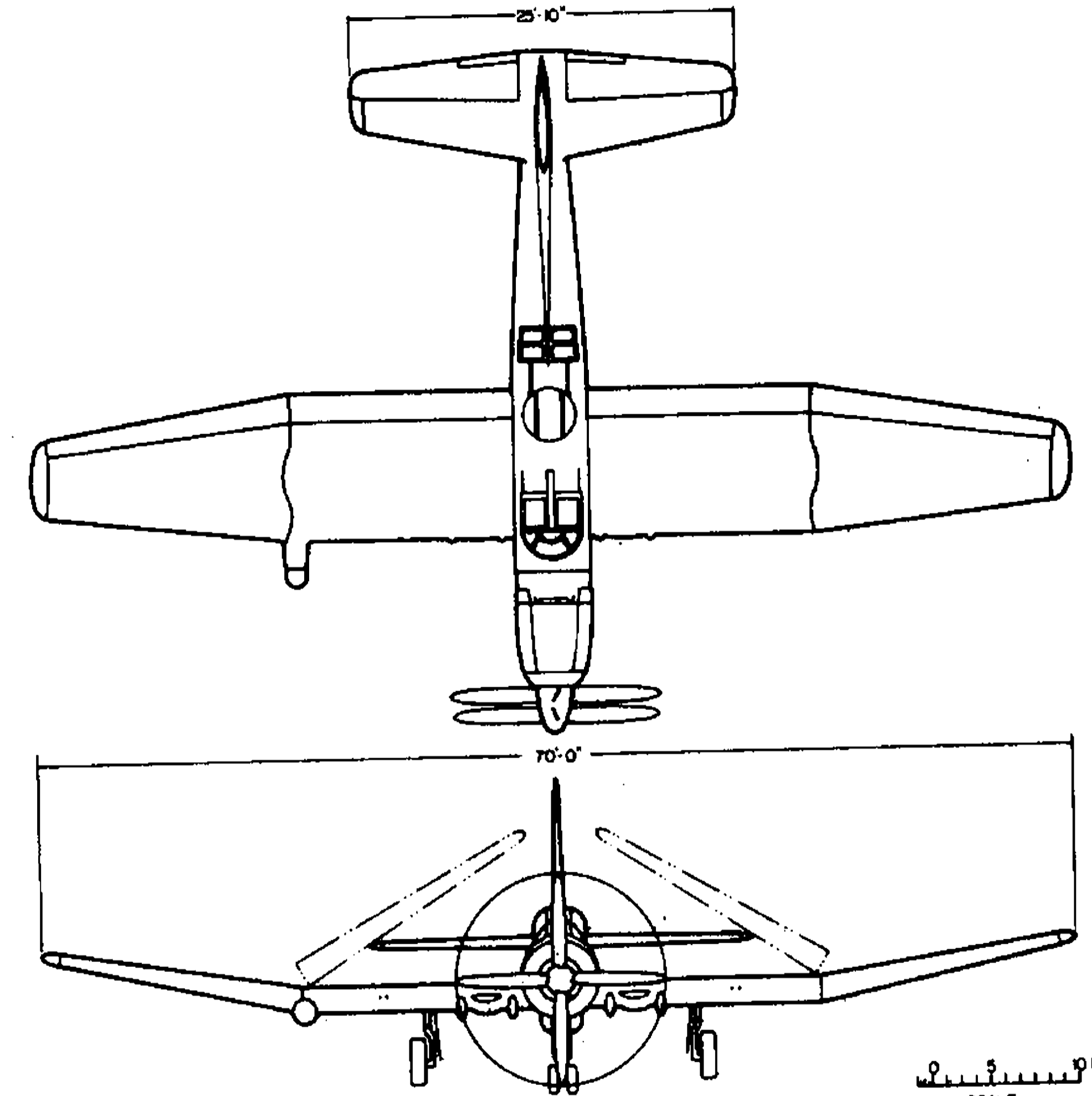
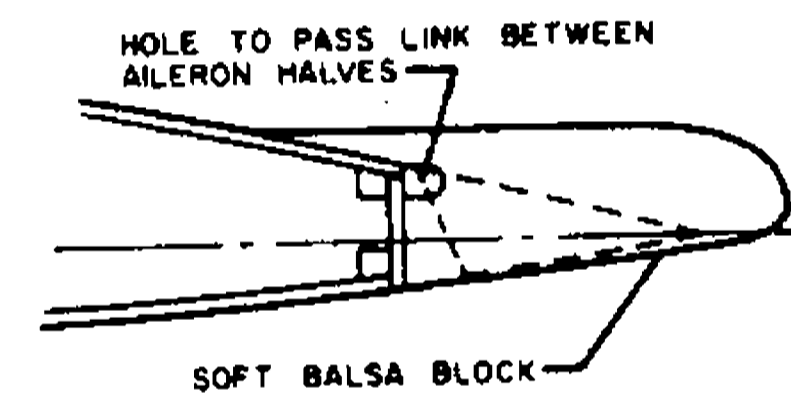
**LANDING GEAR DOOR DETAIL**



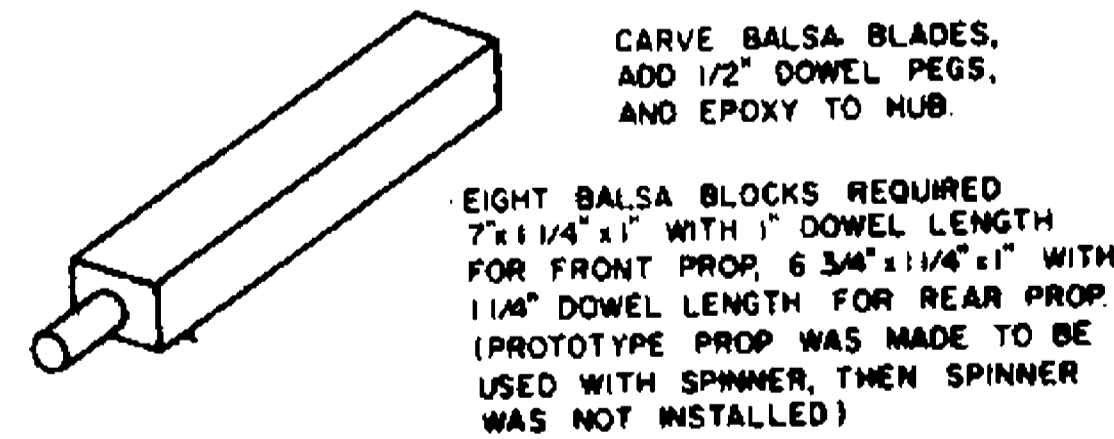
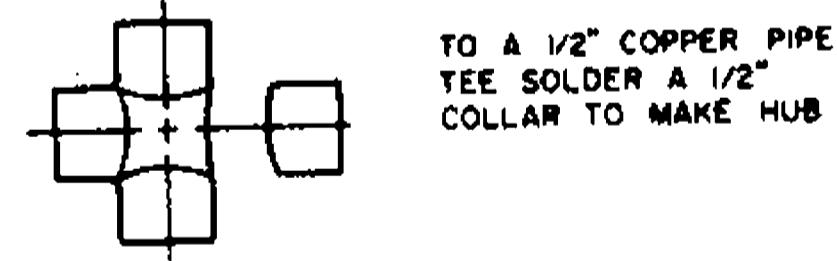
**SIDE VIEW OF OIL COOLER BLOCK**



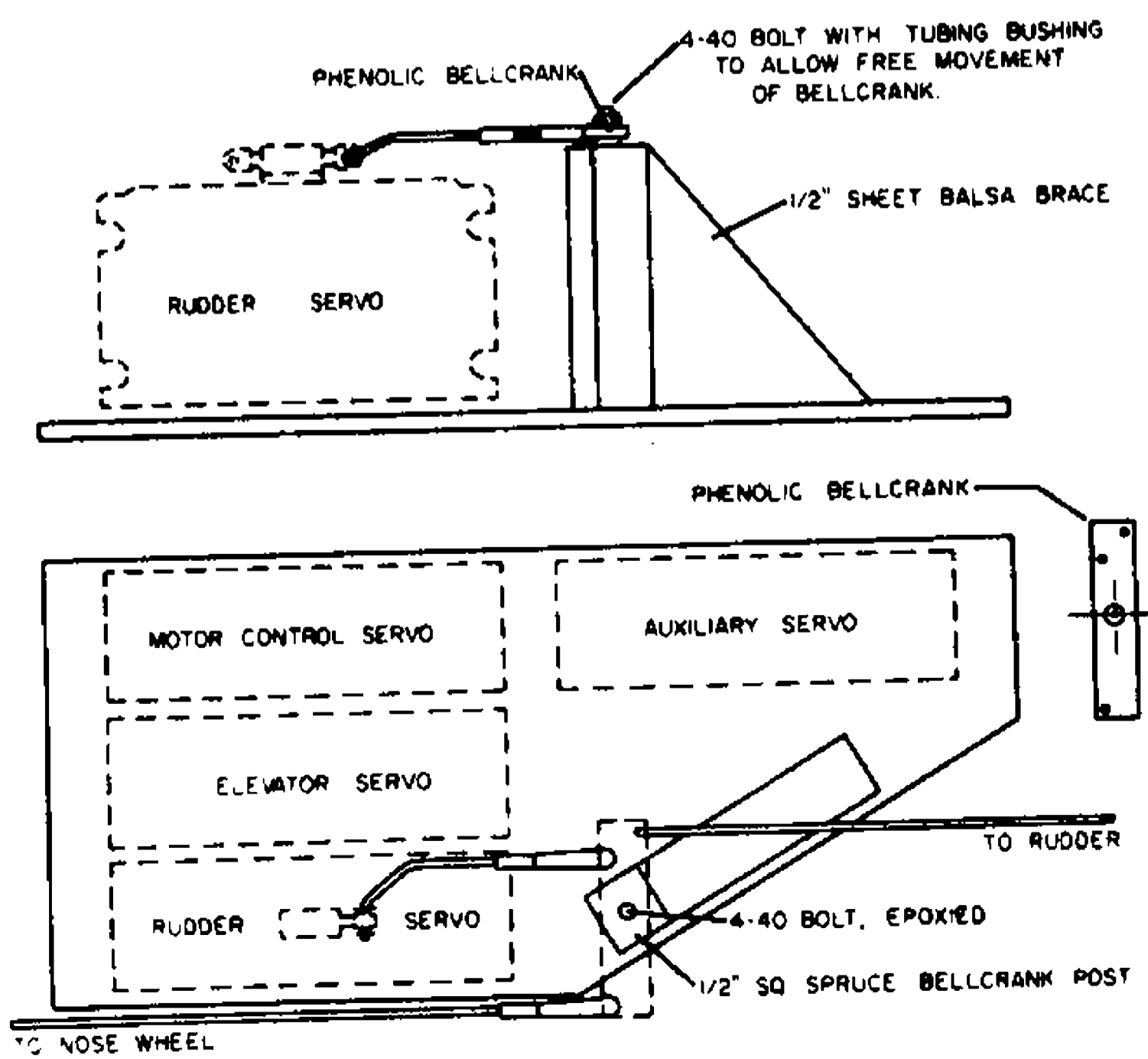
**SIDE VIEW OF DUMMY AILERON CONTROL COVER BETWEEN RIBS 4 & 5**



**MAKING THE SCALE PROPS**



**SERVO MOUNTING & STEERING BAR BOARD**



**BOMB DROPPER GIMMICK IN BOMB PYLON**

